



IDIS Edge AI Plus Cameras

See More, Search Faster, Secure Better

6MP

8MP



One Solution. One Company.



High-Performance AI IP Cameras with Smart Analytics and Precision Optics



IDIS has introduced its Edge AI Camera Plus Lineup, a cutting-edge range of premium AI-powered cameras tailored for environments requiring advanced event detection, exceptional image clarity, and streamlined installation. These cameras seamlessly integrate high-precision hardware with state-of-the-art AI features, delivering powerful video surveillance solutions for commercial-grade applications.

Attribute **Human** | ↻

Hat	Glasses	Bag

Colors



Edge AI Plus Camera Capabilities

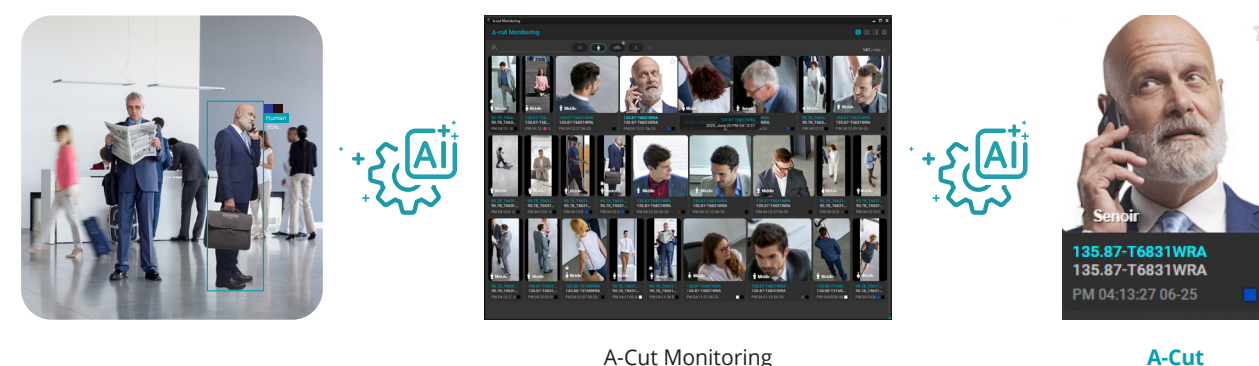
The Edge AI Camera Plus Series delivers next-level intelligence that redefines video surveillance efficiency. As part of this new lineup, IDIS introduces three powerful features developed in-house: A-Cut, AI Search and IDLA Pro — all newly integrated into the Edge AI Camera Plus models.

Together, these innovations dramatically reduce footage review time and elevate situational awareness — enabling operators to concentrate on critical events instead of sorting through endless video. Whether monitoring high-traffic areas or managing large-scale operations, this advanced AI integration provides a clear operational advantage.

A-Cut: Smart Cropped Images Through Object Tracking

IDIS has developed an AI-powered technology called A-Cut which tracks detected objects in video footage. It automatically extracts the most representative scenes for each object, providing them as cropped images, allowing users to quickly identify its type and features.

By clicking on the cropped image, the operator is automatically taken to the precise moment in the recorded video stream when the object last appears. As a result, A-Cut enables to gain context and domain awareness that significantly improves real-time monitoring efficiency and helps security teams respond faster and more accurately.



IDIS AI Search: Intuitive Search Across Multiple Attributes

The cropped images extracted by A-Cut serve as powerful search tools when combined with AI Search. Each image is analyzed by IDIS AI and categorized as human, vehicle, or face.

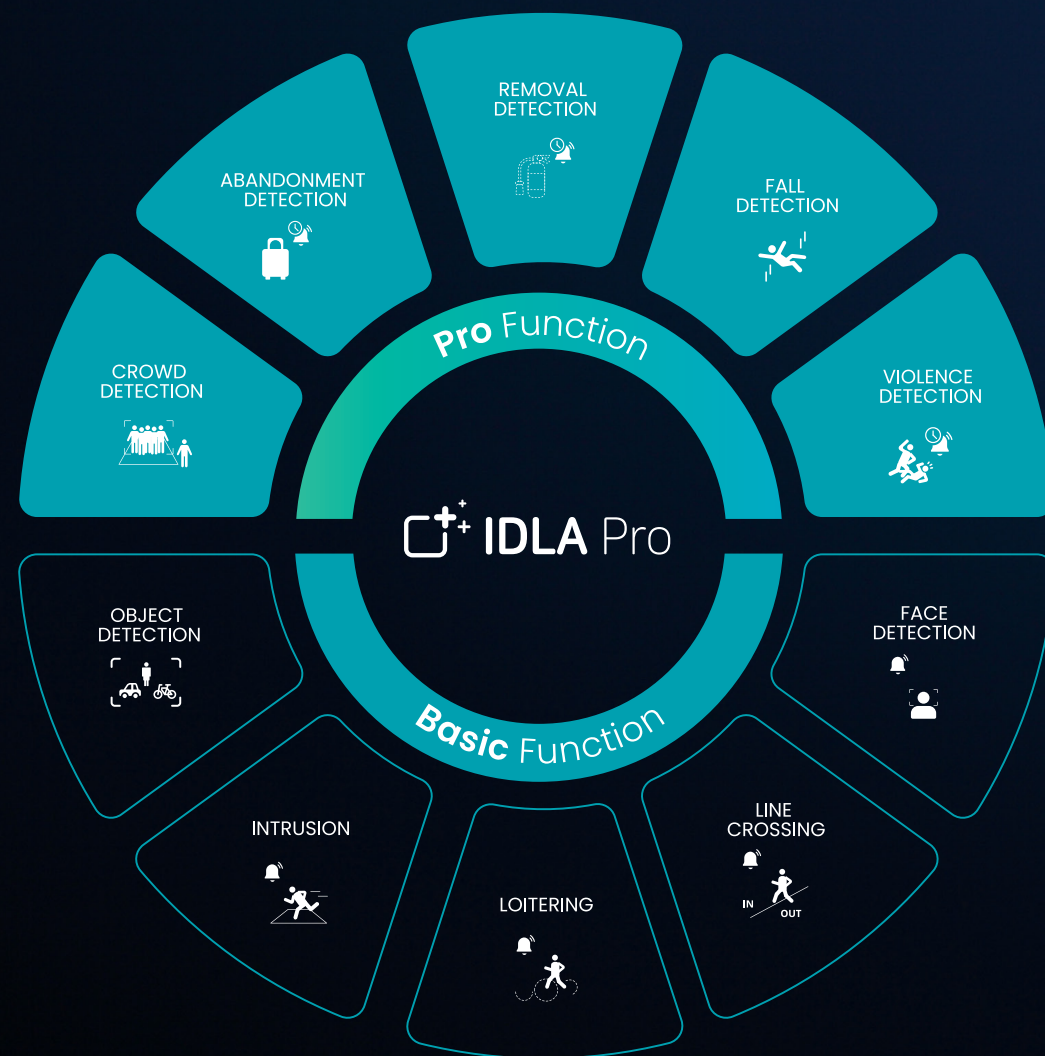
For humans, the system identifies gender, age group, and clothing color. For vehicles, it detects type and color. For faces, it notes gender, age, and accessories like glasses or hats.

These attributes enable users to search efficiently—for example, “male, senior, blue clothing” or “red bike.” IDIS AI Search accelerates and accurately targets incident responses thanks to quick attribute-based filtering.



IDLA Pro: (IDIS Deep Learning Analytics Pro)

Our existing IDLA engine has evolved into a next-generation neural network, going beyond basic detection to include advanced behavioral analysis such as crowd detection, alerts for abandoned or removed objects, and fall detection. These strengthen real-time situational awareness and allow faster responses to potential security and safety risks. From preventing accidents and ensuring public safety to securing highly populated, busy environments, IDLA Pro allows intelligent monitoring with less manual oversight and greater efficiency.



Why IDLA Pro Stands Out?

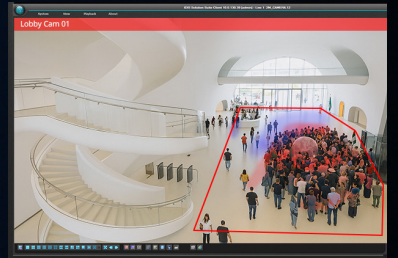
IDLA Pro delivers advanced detection features to identify and respond to abnormal events—such as large crowds, object abandonment/removal, and falls. These are especially valuable in environments where safety, disputes, or incidents must be reviewed quickly.

Unlike other solutions, IDLA Pro runs entirely on the camera, with no need for external servers or extra software licenses. With the Edge AI Camera Plus lineup, users get instant access to these capabilities—without hidden costs. It enables real-time response and makes it easy to locate visual evidence, making it ideal for environments where speed and reliability matter.

Crowd Detection



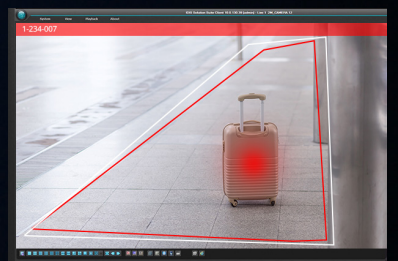
Crowd detection is vital for safety and efficiency. Automating crowd density monitoring in real time with an overlaid density map supports public safety in a range of settings, optimizing pedestrian flow, preventing bottlenecks, and enhancing domain awareness.



Abandoned Object Detection



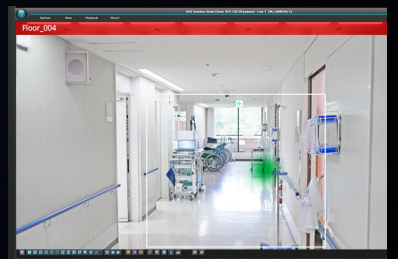
Unattended items, particularly in busy public spaces, pose significant risks. Abandoned object detection automatically identifies suspicious items left unattended, enabling faster responses to potential threats.



Removed Object Detection



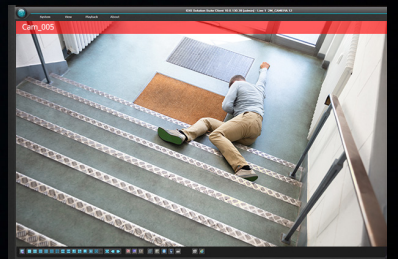
Alerts when valuable items or safety equipment are removed from designated areas provide critical oversight to prevent theft without requiring continuous monitoring, while supporting health and safety standards, and helping staff locate specialist equipment.



Fall Detection



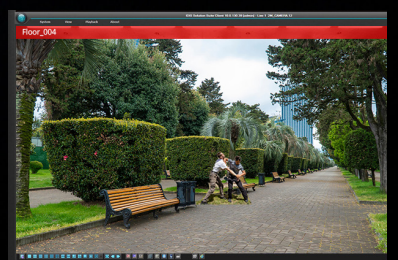
Fall detection can play a vital role in a range of applications. It identifies incidents where individuals collapse or lose consciousness, enabling immediate alerts and rapid intervention, which significantly improve safety and patient care, with faster first aid.



Violence Detection



Automated violence or aggression detection sends instant alerts to security teams to trigger a quicker and appropriate response. Faster intervention aids in de-escalation, reduces harm, and helps create safer environments in schools, hospitals, and public spaces.



High Resolution for Enhanced Security

The Edge AI Camera Plus range supports resolutions up to 8MP, enabling the capture of fine detail with outstanding clarity. Whether recognizing faces, reading license plates, identifying critical visual elements, or individuals using sleight of hand to indicate suspicious activity, the cameras ensure crisp and clear monitoring and improve post-event investigations, making the range ideal for environments where every detail matters.



Stable Footage Without the Shake - Electronic Image Stabilization (EIS)

Electronic Image Stabilization (EIS) ensures clear, shake-free video even when cameras are installed on high poles or in vibration-prone environments like roadsides or construction sites. By using a built-in gyroscope to detect movement and automatically correct image alignment in real time, EIS maintains visual clarity without the need for costly mechanical stabilizers. The result is consistently stable footage, improved readability of critical details, and reduced bit rates—saving both bandwidth and storage. EIS maintains reliable image quality under conditions, which is ideal for flexible mounting and cost-effective installations.



Larger Image Sensor for Low Light Conditions

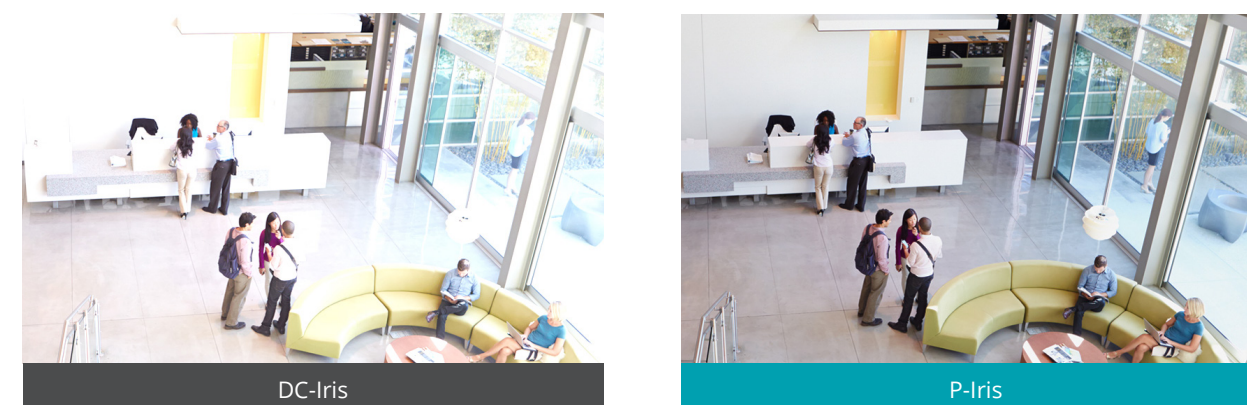
IDIS LightMaster NIR

The Edge AI Camera Plus Range, featuring a larger, more sensitive 1/1.8-inch image sensor, delivers exceptional performance in low-light and nighttime environments. The larger sensor enables sharper, richer details to be captured at up to 60M, even in challenging lighting conditions. Combined with IDIS' LightMaster NIR technology, the cameras deliver clear black-and-white images even in complete darkness, making it an ideal solution for critical spaces with limited or no ambient light.



Intelligent Exposure Control with P-Iris Lenses

P-Iris lenses dynamically adjust the aperture for optimal exposure and image sharpness. Unlike traditional fixed or DC iris lenses, they continuously adapt to changing lighting conditions—indoors or outdoors, such as backlight or weather shifts—minimizing the risk of overexposed or underexposed footage.



Rapid, Flexible Installation

The Edge AI Camera Plus offers fast and flexible installation across a wide range of environments. With gang box compatibility, conduit hole support, built-in safety wires, and precise, user-friendly adjustment mechanisms, installers can benefit from simplified setup, meticulous alignment, and reduced time on-site—all while maintaining the exceptional durability and build quality of the cameras.

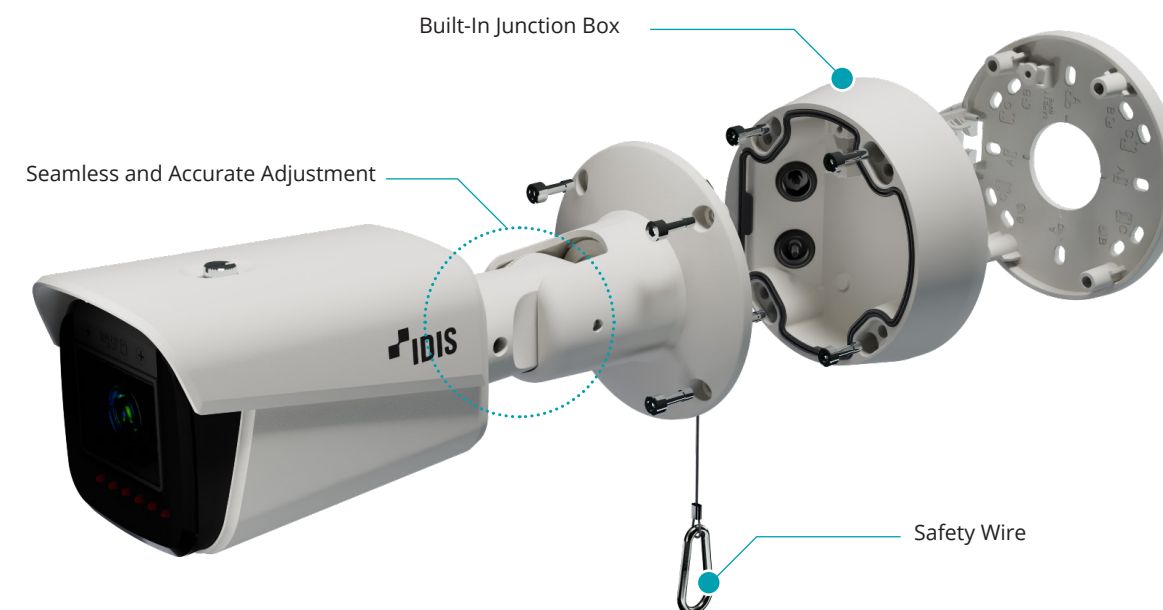


Dome Cameras

Dome models are designed with an intuitive three-part assembly —consisting of a plate, bottom and top. Installers simply pull and turn the plate and bottom, significantly reducing setup time and minimizing complexity. The models also include a built-in installation bracket that is compatible with a wide range of standard gang boxes, eliminating the need for additional accessories. This streamlined design supports faster deployment, lower installation costs, and greater flexibility in the field.

Bullet Cameras

Bullet models feature an integrated screw-joint structure that allows precise angle adjustments with minimal effort—both during and after installation. A single joint supports pan and tilt movement, eliminating the need for complex multi-screw adjustments. The models include a built-in junction box, removing the need to purchase separate accessories. This design enables clean internal cable routing, completely concealing electrical wiring within the housing for a neater finish and improved environmental aesthetics. By hiding the cables inside the structure, the design also enhances security — significantly reducing the risk of tampering and preventing intruders from disabling the camera by cutting exposed wires.



Mounting Bracket Designed for No Pigtail, Gang Box Plate, and Conduit Hole Compatibility

Compliance-Ready. Mission-Ready.

The Edge AI Camera Plus range is fully certified for global compliance and trusted for high-security deployments. It meets key U.S. government procurement standards with NDAA and TAA compliance, and is FIPS 140-2 validated, confirming robust data encryption aligned with federal cybersecurity requirements. Together, these certifications ensure readiness for U.S. government, defense, and other mission-critical applications. Additionally, the lineup carries FCC, CE, and KC certifications, verifying compliance with safety and electrical performance standards across the U.S., Europe, and Asia.



IDIS Edge AI Plus Cameras

See More, Search Faster, Secure Better



H.265 6MP AI IR Dome Camera

DC-D6631WRA

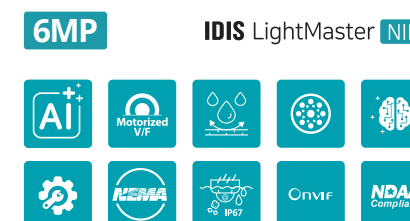
- IDIS Edge AI Plus Camera
- Easy installation with DirectIP NVR
- H.265 and Intelligent Codec
- Remote Motorized Focus and Zoom
- 12V DC, PoE (IEEE 802.3af Class 3)
- IR LED (60m / 196.9ft (6ea))
- IDIS Deep-Learning Analytics (IDLA) and IDIS Deep-Learning Analytics Pro (IDLA Pro)
- Attribute Support (Human, Vehicle, Face), and A-cut Support
- IK10
- IP67, NEMA 4X
- Smart Failover (Up to 512GB)
- Supports ONVIF
- True WDR
- Alarm in / out



H.265 6MP AI IR Bullet Camera

DC-T6631WRA

- IDIS Edge AI Plus Camera
- Easy installation with DirectIP NVR
- H.265 and Intelligent Codec
- 12V DC, PoE (IEEE 802.3af Class 3)
- IR LED (60m / 196.9ft (6ea))
- IDIS Deep-Learning Analytics (IDLA) and IDIS Deep-Learning Analytics Pro (IDLA Pro)
- Attribute Support (Human, Vehicle, Face), and A-cut Support
- IK10
- IP67, NEMA 4X
- Smart Failover (Up to 512GB)
- Supports ONVIF
- True WDR
- Alarm in / out



H.265 8MP AI IR Dome Camera

DC-D6831WRA

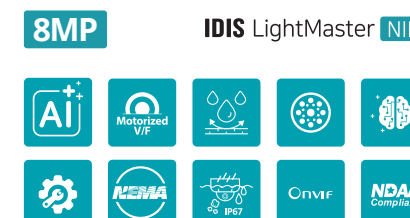
- IDIS Edge AI Plus Camera
- Easy installation with DirectIP NVR
- H.265 and Intelligent Codec
- Remote Motorized Focus and Zoom
- 12V DC, PoE (IEEE 802.3af Class 3)
- IR LED (60m / 196.9ft (6ea))
- IDIS Deep-Learning Analytics (IDLA) and IDIS Deep-Learning Analytics Pro (IDLA Pro)
- Attribute Support (Human, Vehicle, Face), and A-cut Support
- IK10
- IP67, NEMA 4X
- Smart Failover (Up to 512GB)
- Supports ONVIF
- True WDR
- Alarm in / out



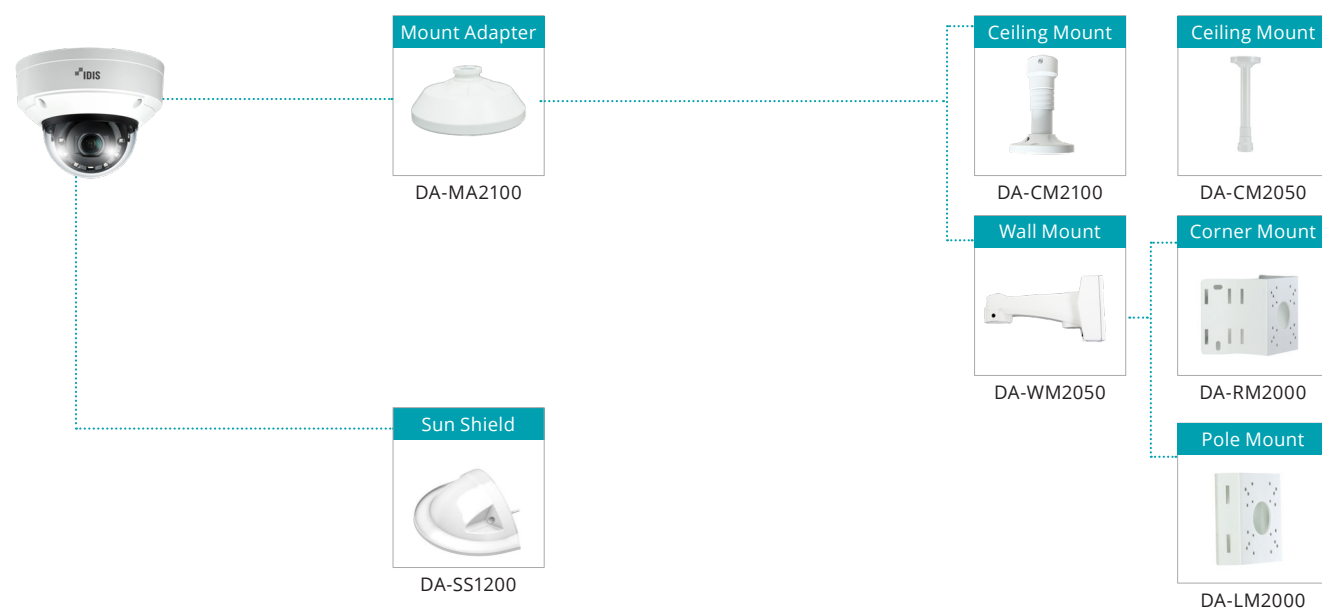
H.265 8MP AI IR Bullet Camera

DC-T6831WRA

- IDIS Edge AI Plus Camera
- Easy installation with DirectIP NVR
- H.265 and Intelligent Codec
- 12V DC, PoE (IEEE 802.3af Class 3)
- IR LED (60m / 196.9ft (6ea))
- IDIS Deep-Learning Analytics (IDLA) and IDIS Deep-Learning Analytics Pro (IDLA Pro)
- Attribute Support (Human, Vehicle, Face), and A-cut Support
- IK10
- IP67, NEMA 4X
- Smart Failover (Up to 512GB)
- Supports ONVIF
- True WDR
- Alarm in / out



H.265 6MP/8MP AI IR Dome Camera



The diagram illustrates two mounting options for the camera. On the left, a white camera body is shown mounted on a white base. A dashed line extends from the camera's lens, indicating its field of view. To the right, two mounting brackets are shown: the DA-RM2000 Corner Mount and the DA-LM2000 Pole Mount. The DA-RM2000 is a white L-shaped bracket, and the DA-LM2000 is a white rectangular bracket. Both brackets are shown with a white camera body attached. A dashed line indicates the camera's field of view.



IDIS Edge AI Plus Cameras

See More, Search Faster, Secure Better



IDIS HQ

IDIS Tower, 344 Pangyo-ro, Bundang-gu,
Seongnam-si, Gyeonggi-do, 13493
Republic of Korea

T +82 (0)31 723 5400
F +82 (0)31 723 5100
E sales@idisglobal.com

IDIS Americas

101 Wrangler Drive
Ste.201 Coppell, TX 75019
U.S.A.

T +1 469 635 6800
E sales@idisamericas.com

IDIS Europe

1000 Great West Road Brentford,
Middlesex TW8 9HH
The United Kingdom

T +44 (0)203 657 5678
F +44 (0)203 697 9360
E uksales@idisglobal.com

IDIS Middle East

P.O. Box 341037 D-308,
DSO HQ Bldg, Dubai Silicon Oasis
Dubai, U.A.E.

T +971 4 501 5434
F +971 4 501 5436
E sales_mena@idisglobal.com

IDIS Netherlands

De Slof 9
5107 RH Dongen
The Netherlands

IDIS Benelux

T +31 (0)162 387 247
F +31 (0)162 311 915
E sales@bnl.idisglobal.com

IDIS Tokyo Office

1633 W16F Shibuya Mark City 1-12-1
Dogenzaka Shibuya-ku Tokyo 150-0043
Japan

T sales_japan@idisglobal.com

Turkiye Liaison Office

T +90 533 696 7780
F sales_mena@idisglobal.com

IDIS and the identifying product names and numbers mentioned herein are registered trademarks of IDIS Co., Ltd. All non-IDIS brands and product names are trademarks or registered trademarks of their respective companies. Product appearance, build status, and specifications are subject to change without notice.
© IDIS Co., Ltd. All rights reserved.

*Product specifications in this brochure are subject to change. Please check our website for the latest information.
Images used in this document are for illustrative purposes only.

For more information, please visit www.idisglobal.com

Made in **KOREA**

NDAA
Compliant

TAA
Compliant